

# TURN BOWL

881 Showroom Place,  
CHULA VISTA, CA 91914  
T: 619 565 BOWL (2695)

WWW.BOWLELT.COM  
SUN-THU 11:30AM - 12AM  
FRI-SAT 11:30AM - 1:30AM  
EVENTS@BOWLELT.COM

## NEXT STOP – GOOD TIMES.

### PARTY IN STYLE

- \_10 Bowling Lanes + 2 Pool Tables
- \_50 HD Flat-screen TVs
- \_1,000 Square Foot Patio
- \_400 Person Tavern Capacity
- \_15,000 square foot sports lounge
- \_Food and open bar packages
- \_Corporate team building packages:  
Private tournaments, shirts and trophies
- \_Select Audio-visual amenities include  
PowerPoint, wireless mic, sound system  
and iPod jack
- \_Private and semi-private event space
- \_Room, food and bar minimums may apply
- \_Located in the EastLake Design District

East Lake Tavern is your neighborhood destination to catch the latest game on any of our Flat-screen TV's, grab a brew, or warm up the old bowling arm. A full service venue for your next event. Whether it's an action packed bowling tournament or your annual sales meeting. We'll do all the work. At ELT, there's fun, food and bar packages for every budget. Visit the site, call or email to book your next event.

**FOR A GOOD TIME CALL 619-565-BOWL (2695),  
VISIT OUR WEBSITE WWW.BOWLELT.COM OR EMAIL US  
AT EVENTS@BOWLELT.COM.**



### SPECIAL EVENT OPTIONS

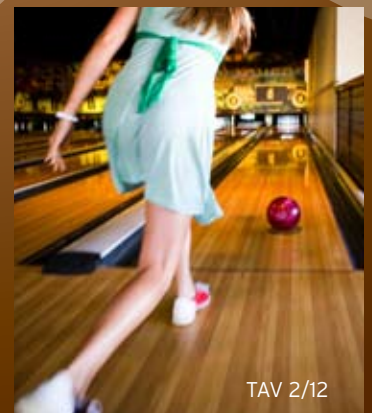
Parties of 20 guests or more, 4 to 10 lanes, and full venue buy-out. Groups may select set-up and choice of event menu and bar package. Conditions may apply. Ages 21 & up @ 9pm Sunday-Thursday and @ 6pm Friday & Saturday. Time subject to change for special events

#### CAPACITY

Full Venue	400	guests
Patio	50	guests
Otay 4	50	guests
Bonita 6	70	guests
Bonita 6 + Kingpin Alley	100	guests
Kingpin Alley	30	guests

#### AVAILABLE AMENITIES

- \_PowerPoint Presentation
- \_DVD
- \_Custom messages on lanes
- \_iPod Dock
- \_Wireless Microphone
- \_Sound System
- \_Digital Logo Display
- \_Event Photography
- \_Team Apparel
- \_Customized Dessert
- \_Bowling Tournament -  
Organize Teams
- \_Team Building
- \_Family Fun
- \_Shuttle Transportation



# TURN BOWL

881 SHOWROOM PLACE  
CHULA VISTA • CALIFORNIA 91914  
BOWLELT.COM • 619.565.BOWL

SUN-THU  
11:30AM - 12AM  
FRI-SAT  
11:30AM - 1:30AM

## EVENT PACKAGE MENUS

FOOD AND BAR MINIMUMS MAY APPLY

### BUFFET-STYLE FOOD PACKAGES

For Parties of 15 or less Pre-Order off the Menu. For Parties 15 or more you may choose from one of our Delicious Buffet-Style Food Packages. Pricing is per person.

### STEP 1: PICK YOUR FOOD PACKAGE

#### THE WARM-UP

House Made Tortilla Chips and Salsa, Tater Skins, and our Famous Wings

#### TAVERN TASTER

House Made Tortilla Chips and Salsa  
Chicken Strippers w/ Tavern Sauce, Tater Skins,  
Fresh Veggie platter with Ranch Dressing,  
Guacamole

#### BACKYARD GRILL

Hamburger Sliders, Hotdogs, Potato Salad,  
Market Salad with Ranch and Vinaigrette Dressing,  
House made Potato Chips. Condiment Tray

#### FAJITA FIESTA

Fajita Style Chicken and Beef with Grilled Peppers  
and Onions Black Beans, Spanish Rice, Pico De  
Gallo House Made Tortilla Chips and Salsa

#### PIZZA PIZZA

Cheese, Pepperoni, Veggie, Our Famous Chicken  
Wings, Market Salad with Ranch and Vinaigrette  
Dressing

#### TAVERN DELI

Turkey, Ham and Roast Beef with Sliced Provolone,  
Cheddar and Swiss Cheese, Sliced Bread, Potato  
Salad and Market Salad with Ranch and  
Vinaigrette Dressing

#### VIVA LA PASTA

Meat Lasagna, Cheese Tortellini with Basil Pesto  
Sauce, Meatballs in Marina Sauce, Caesar salad  
and Garlic Bread

#### HIGH ROLLER

NY Strip Steak and Ahi Tuna, Garlic Mashed  
Potatoes, Grilled Asparagus, Caesar Salad, Artisan  
Rolls and Assorted Dessert Platter.

### STEP 2: PICK YOUR BEVERAGE PACKAGE

BAR MINIMUMS MAY APPLY

#### NON-ALCOHOLIC DRINK TAB

Includes: Soft drinks, ice tea, coffee and water

#### CASH AND CARRY BAR TAB

Guests pays own tab. 20% gratuity will be  
automatically added to each guest's tab when  
closed. Current sales tax also applies. There is  
a maximum of one tab per lane.

#### HOSTED BAR TAB

All drinks will go on one tab with a limit  
specified by the guest. 20% gratuity will be  
automatically added to each guest's tab when  
closed. Current sales tax also applies.

#### DRINK TICKETS

##### Beer + Wine Tickets

Includes 16 oz. domestic draft beer and premium  
and domestic bottled beers, house wines by the  
glass

##### Call Brand Tickets

Includes call brand cocktails, 16 oz. draft and bottled  
beers (domestic and premium), house wines by  
the glass, iced tea, soft drinks, juice and water. Call  
brand cocktails includes Svedka, Bacardi, Captain  
Morgan, Sauza Gold and Hornitos, Jagermeister,  
Seagram's Seven, Jameson.

##### Super Premium Tickets

Includes full premium bar, iced tea, soft drinks, juice  
and water. Premium brand cocktails include Grey  
Goose, Belvedere, Ketel One, Patron Silver, Bombay  
Sapphire, Crown Reserve, J&B. Excludes bottles of  
wine and champagne.

### STEP 3: DESSERT

Options include Bowling Pin Cupcake Tower,  
Bowling Pin Specialty Cake, Seasonal Fruit Platter.  
Speak with your Event Coordinator about creating  
your own unique dessert package.

### STEP 4: FUN

Call for your bowling rate information.

PLEASE CONTACT:  
EVENTS@BOWLELT.COM  
OR CALL 619.565.BOWL